



## APARTMENT 27 MASTER WILLIAMS PLACE FOLKESTONE, CT20 1FF

**£895 PER MONTH**

Nestled in the heart of Folkestone, this exquisite one-bedroom apartment at Master William's Place presents a unique opportunity for modern living. Completed in 2025, this new build boasts an energy-efficient design, ensuring low running costs while providing a comfortable and stylish environment.

Upon entering, you will find a welcoming reception room that seamlessly connects to a well-appointed kitchen. The kitchen features integrated Bosch appliances, offering both functionality and elegance, perfect for those who enjoy cooking. The thoughtful layout maximises space and light, creating an inviting atmosphere throughout.

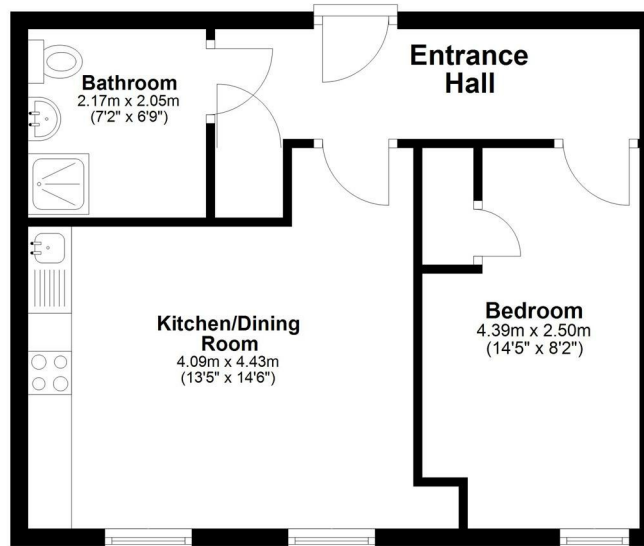
One of the standout features of this apartment is its state-of-the-art ventilation system, which enhances air quality and comfort. Additionally, the property has the option for high-speed internet access, utilising Folkestone's first-ever 10Gb/s Lease Line, making it an ideal choice for remote workers or anyone who values seamless connectivity for streaming and gaming.

**WEST END  
ESTATES**

LETTINGS AND PROPERTY MANAGEMENT

## Ground Floor

Approx. 40.5 sq. metres (435.7 sq. feet)



Total area: approx. 40.5 sq. metres (435.7 sq. feet)

Whilst every attempt has been made to ensure the accuracy of the floorplan contained here, measurements of doors, windows, rooms and any other items are approximate and no responsibility is taken for any error, omission or mis-statement. This plan is for illustrative purposes only and should be used as such by any prospective purchaser. The services, systems and appliances shown have not been tested and no guarantee as to their operability or efficiency can be given.  
Plan produced using PlanUp.



Energy Efficiency Rating		
	Current	Potential
Very energy efficient - lower running costs		
(92 plus) <b>A</b>		
(81-91) <b>B</b>		
(69-80) <b>C</b>		
(55-68) <b>D</b>		
(39-54) <b>E</b>		
(21-38) <b>F</b>		
(1-20) <b>G</b>		
Not energy efficient - higher running costs		
<b>England &amp; Wales</b>	EU Directive 2002/91/EC	

**EPC Rating:**      **Council Tax Band: A**

Agents Note: Whilst every care has been taken to prepare these particulars, they are for guidance purposes only. All measurements are approximate and are for general guidance purposes only and whilst every care has been taken to ensure their accuracy, they should not be relied upon and potential buyers/tenants are advised to recheck the measurements

West End Estates Folkestone  
7 Sapper Row  
Folkestone  
Kent  
CT20 3WT

01303 478777  
office@westend-estates.co.uk

**WEST END  
ESTATES**  
LETTINGS AND PROPERTY MANAGEMENT